



Procedure to assemble a recurve bow



☛ Check for any signs of damage on the bow, limbs & string **BEFORE** assembling!

1. Check the **bow** of the **CORRECT** version and the bow **limbs** with the **CORRECT** draw weight **before** assembling.



Figure 1a. Label on bow Figure 1b. Label on limbs

2. Remove the protective foam and fix the **upper** and the **lower** limb onto the bow by sliding into the corresponding junction **until** a '**CLICK**' sound is heard.



Figure 2a. Remove foams on limbs before insertion



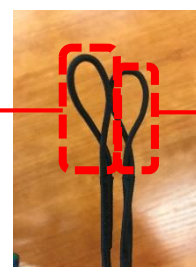
Figure 2b. Proper insertion of limbs on bows (Top)



Figure 2c. Proper insertion of limbs on bows (Side)

3. Fix the string on the bow with the **LARGER** loop **loosely** into the arch position at the rear end of the **UPPER** limb & the **smaller** loop **exactly** into the arch position at the rear end of the **lower** limb.

LARGER loop
@ **UPPER** limb



smaller loop
@ **lower** limb

Figure 3. Different sized loops of bow string

4. Fix the **smaller** loop of the **bow-stringer** into the top of the arch position of the **UPPER** limb & the **LARGER** loop into the top of the arch position of the **lower** limb of the bow.

Step on the bow-stringer and use **one hand** to **pull up the bow** with the **other hand** to fix the **LARGER** loop of the bow string into the arch position **properly** on the **UPPER** limb while **make sure** the **smaller** loop is fixed into the arch position of the **lower** limb.

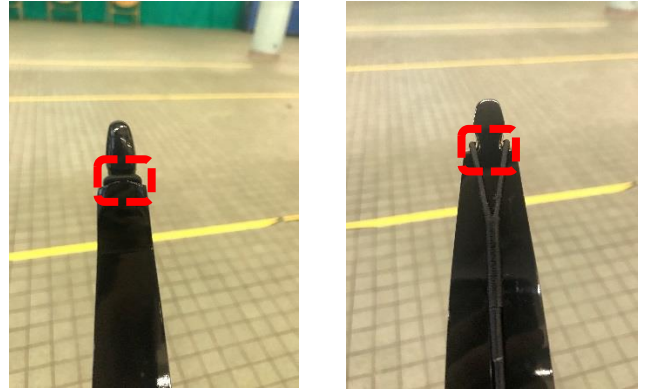


Figure 4a & 4b. Proper fixing of loops into arch position on limb of bow (Front side vs Back side)

5. Install the **sight** on the bow and **adjust** the sight to the **position** of '**2.5**'.

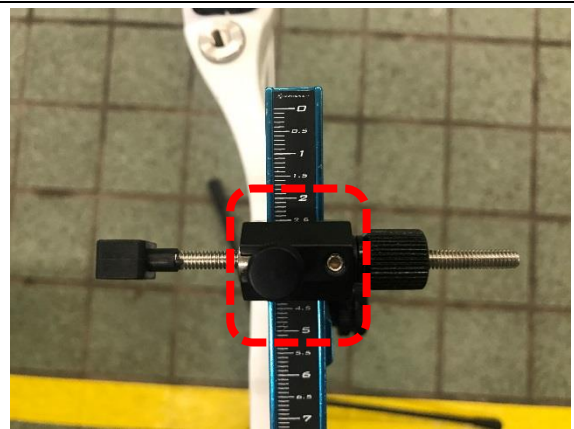


Figure 5. Installing sight on the bow & adjust its position to the marking of '2.5'

6. Install the **button** by fixing into the **hole next to the stage**. **Screw** and **fix** the button **tightly** with the screw.



Figure 6. Installing button onto the bow