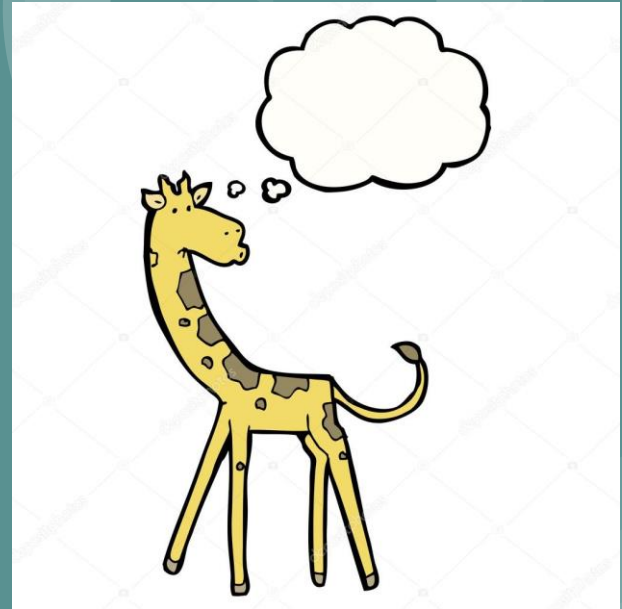


Field work presentation

Andy Cheung
Alison Lui
Phoebe Ip
Ritie Shing
Jimmy Wong
Timothy Yu





Problem

Is the major sources of air pollutants in our school come from TKO TunnelRoad?

Hypothesis

The major sources of air pollutants in our school, PLKLFC come from TKO Tunnel Road.





Data collection

Aim: Measure the air pollutant at the same position on the roof-top around 5:00pm-5:15pm on tuesday and analysis the data.

Venue: Roof-top

Date: -17 Sep2019

-15 Oct2019

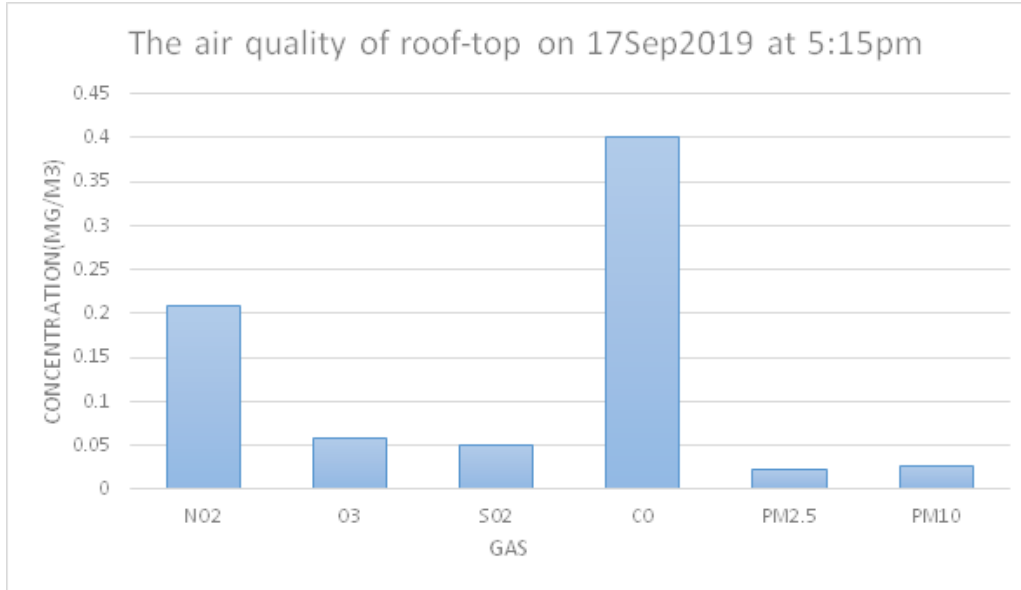
-24 Sep2019

-22 Oct2019

- 8 Oct2019



Result of 17 Sep 2019



Date: 17 Sep 2019

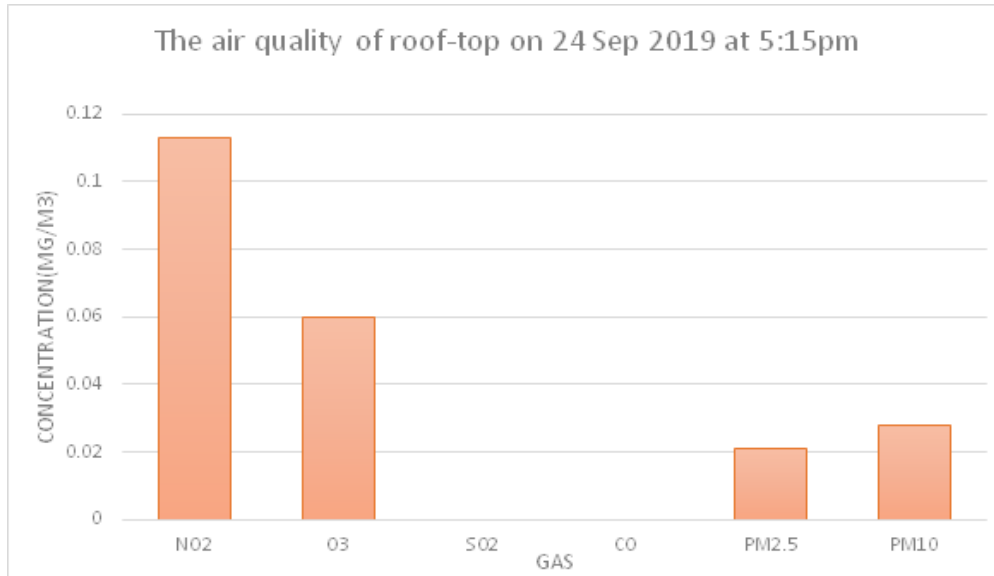
Time: 5:15pm

Place: School's roof-top

Wing direction: **South East**



Result of 24 Sep 2019



Date: 24 Sep 2019

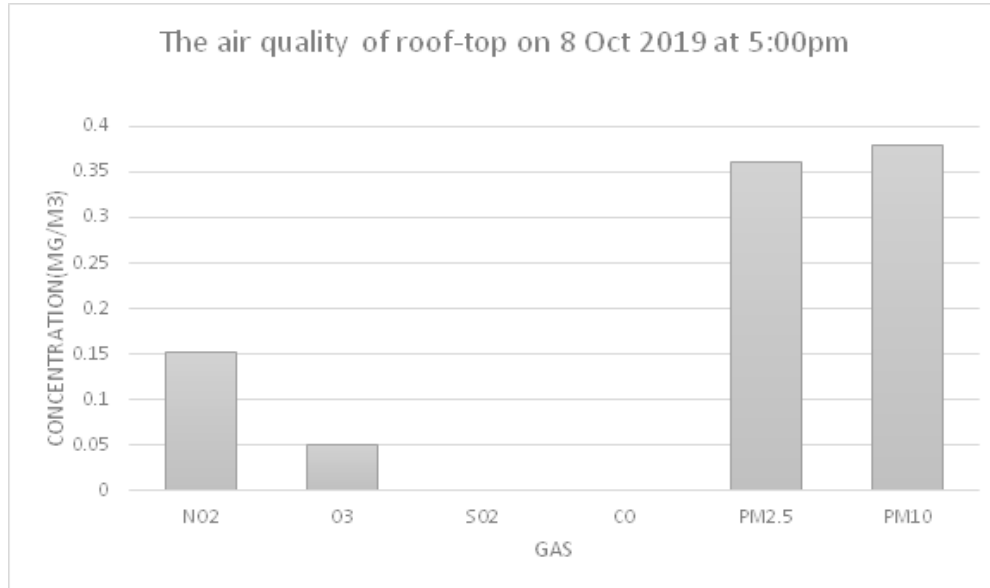
Time: 5:15pm

Place: School's roof-top

Wing direction: **South East**



Result of 8 Oct 2019



Date: 8 Oct 2019

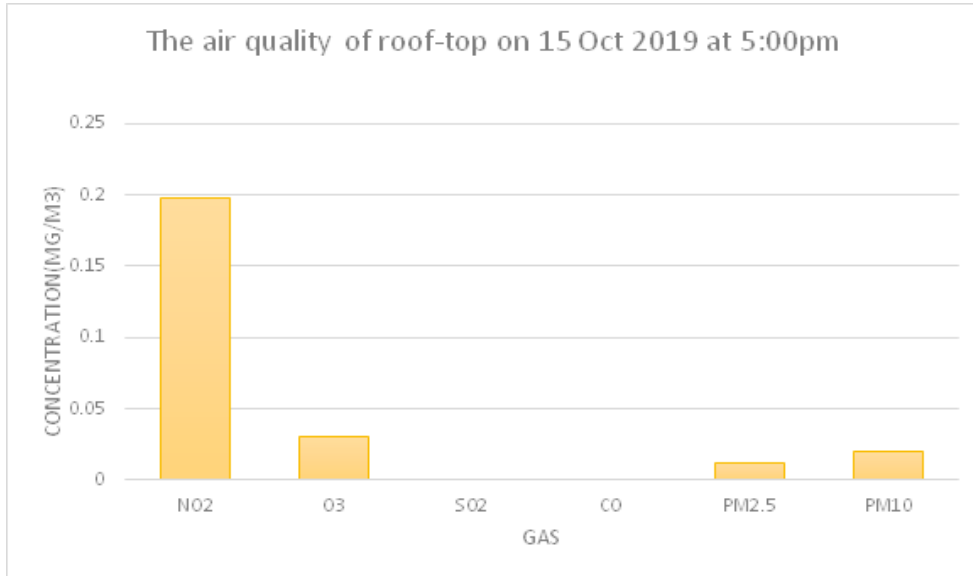
Time: 5:00pm

Place: School's roof-top

Wing direction: South East



Result of 15 Oct 2019



Date: 15 Oct 2019

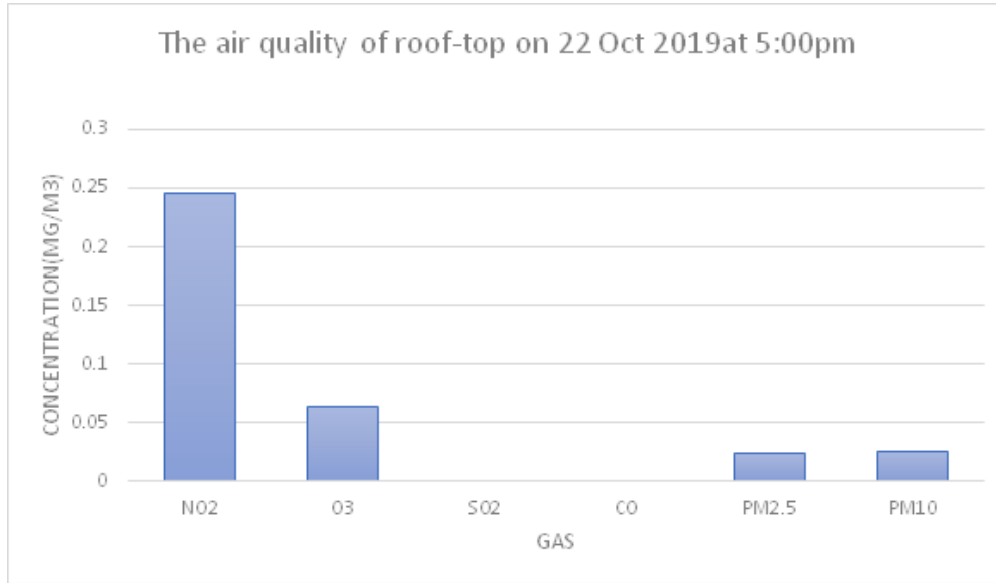
Time: 5:00pm

Place: School's roof-top

Wing direction: **East**



Result of 22 Oct 2019



Date: 15 Oct 2019

Time: 5:00pm

Place: School's roof-top

Wing direction: **South East**



Data analysis (combined 5 data)

Chart a)

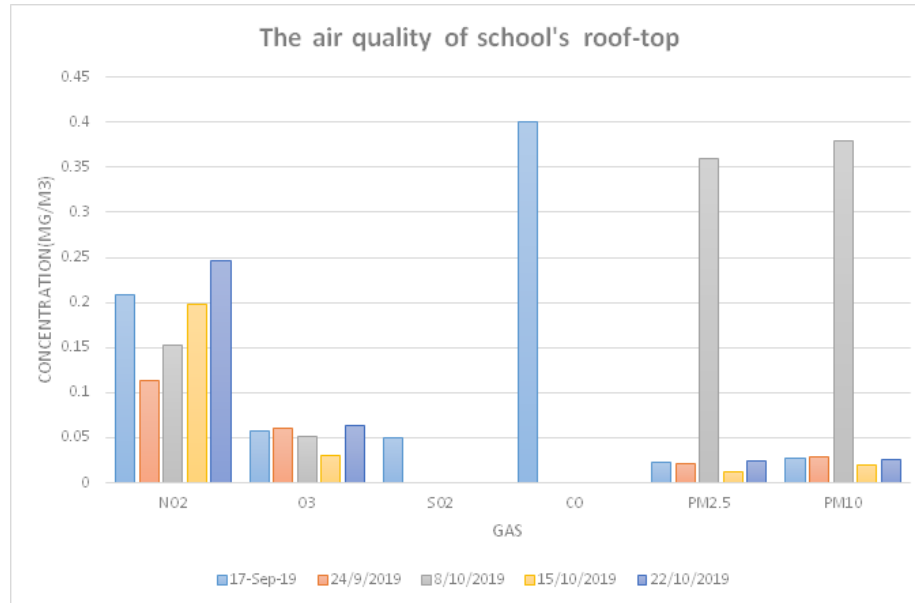
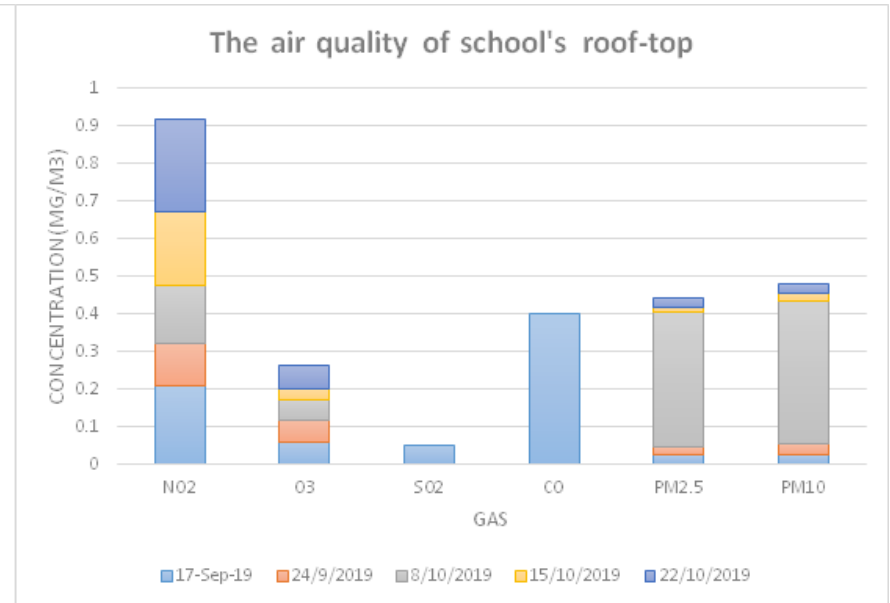


Chart b)



Data analysis

The TKO Tunnel Road located at the SE from the PLK laws Foundation College

Wind direction mainly: SE



Data conclusion

The hypothesis of 'major sources of air pollutants in our school, PLKLC come from TKO Tunnel Road.' is accepted, easy





Evaluation

All in all, the maximum surface area contact the air of the wind, there will be lower air quality due to the rate for approaching the gases from the tunnel and not all the gases will be produced by there, you can see SO_2 and CO is almost 0 every time. Yet, there is much NO_2 .